

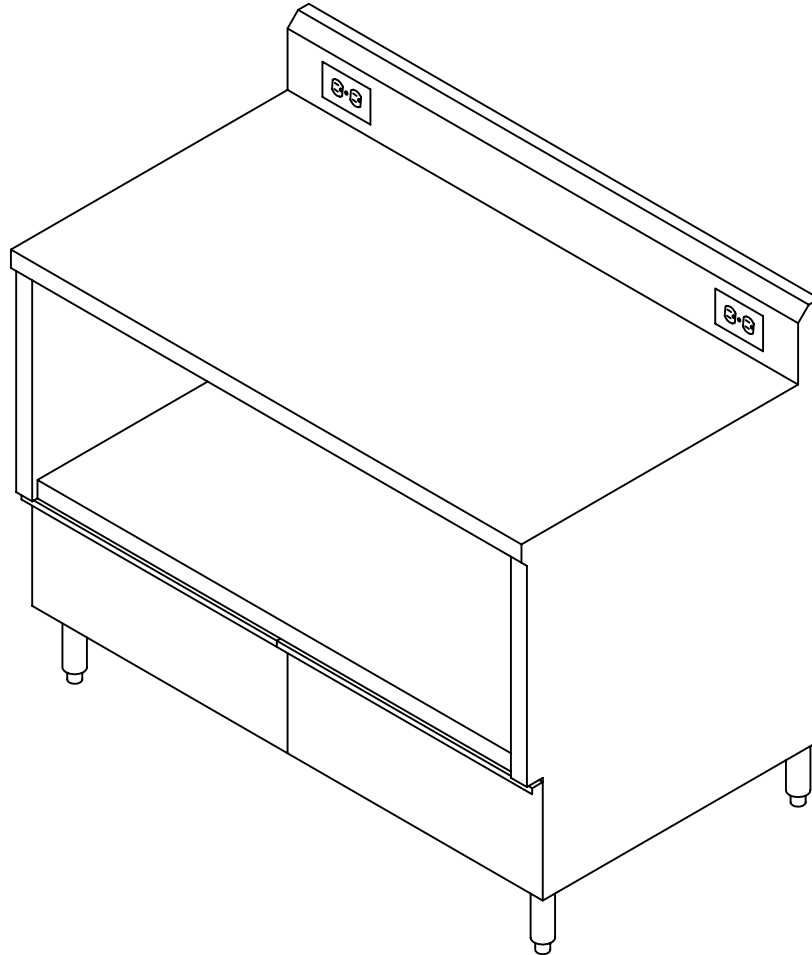
Commercial Stainless

ITEM # _____

QTY. _____

MODEL # CUCDB

UTILITY CABINET WITH DRAWER BASE



SPECIFICATIONS

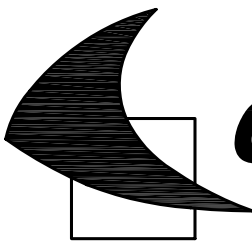
UTILITY CABINET WITH DRAWER BASE TO HAVE 16 GA. TYPE 304, 18/8 STAINLESS STEEL, POLISHED TO A # 4 SATIN FINISH. END PANELS TO BE 18 GA. S/S WELDED TO TOP. SHELF TO BE 18 GA. S/S. DRAWERS TO HAVE REMOVABLE 20" X 20" X 5" DEEP PLASTIC LINERS. DRAWER SLIDES TO BE 100 LB. CAPACITY PER PAIR. BACKSPLASH TO BE PROVIDED WITH TWO (2) DUPLEX RECEPTACLES. LEGS TO BE 1 5/8" O.D. S/S TUBING WITH ADJUSTABLE S/S BULLET FEET. ALL JOINTS TO BE CONTINUOUSLY WELDED, GROUND SMOOTH, & POLISHED.

955 PATTERSON DRIVE
BLOOMSBURG, PA. 17815
TELEPHONE: (570) 387-8980 FAX: (570) 387-8982



CUSTOM BUILT
FOODSERVICE
EQUIPMENT





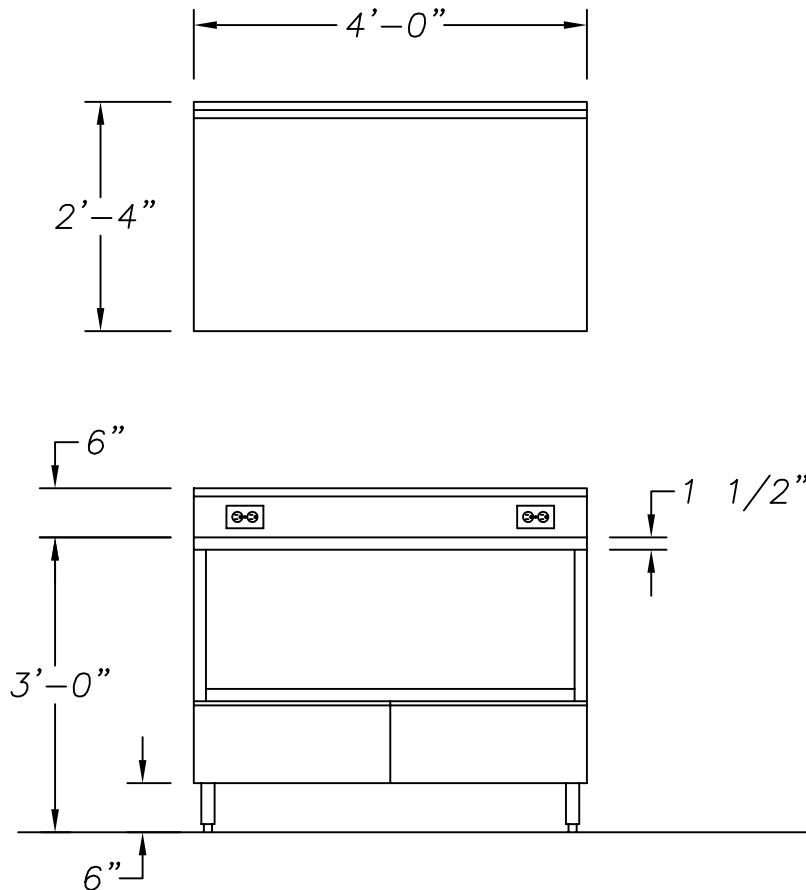
Commercial Stainless

ITEM # _____

QTY. _____

MODEL # CUCDB

UTILITY CABINET WITH DRAWER BASE



OPTIONS

- | | |
|----------------------------------|------------------------------|
| 1. 14 GA. S/S TOP | 2. ROLLED EDGE TOP |
| 3. MARINE EDGE TOP | 4. 5" DIA. SWIVEL CASTORS |
| 5. 3/4" R. TURN-UP ON BACKSPLASH | 6. 1 1/4" SQUARE STEEL FRAME |
| 7. FLANGED FEET | 8. 1 1/4" SQUARE S/S FRAME |
| 9. SOUND DEADENING | 10. REMOV. S/S KICKPLATE |

955 PATTERSON DRIVE
BLOOMSBURG, PA. 17815
TELEPHONE: (570) 387-8980 FAX: (570) 387-8982



CUSTOM BUILT
FOODSERVICE
EQUIPMENT 