

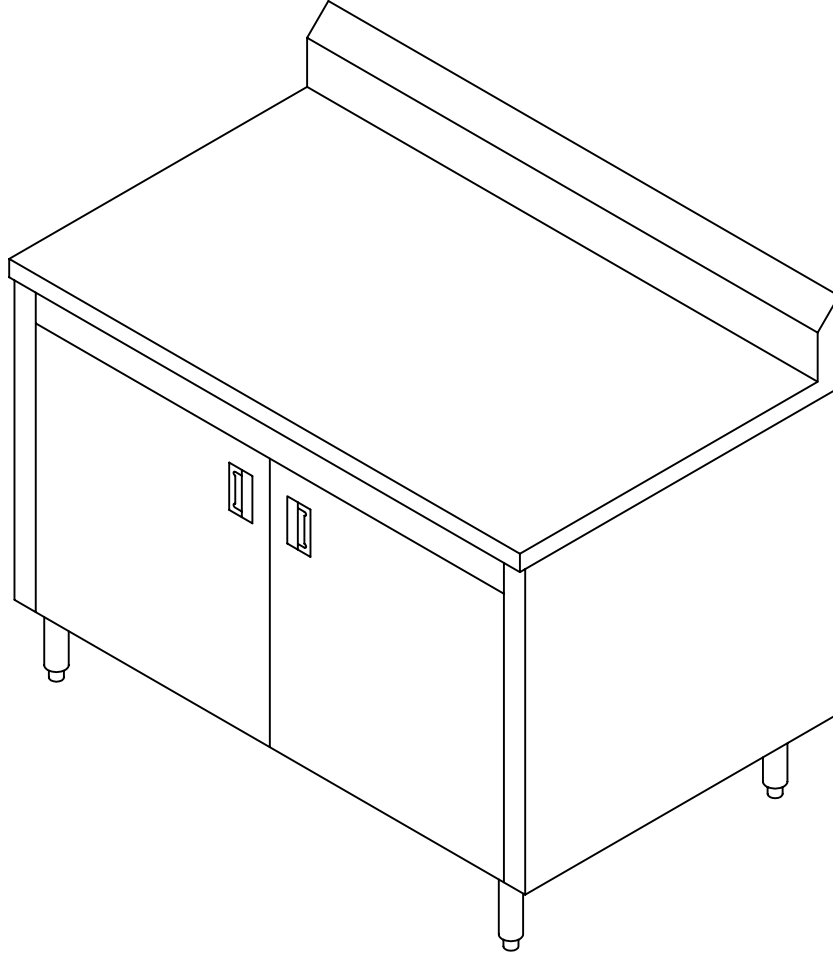
# Commercial Stainless

ITEM # \_\_\_\_\_

QTY. \_\_\_\_\_

MODEL # CUCBHD

## UTILITY CABINET WITH BACKSPLASH AND HINGED DOORS



### SPECIFICATIONS

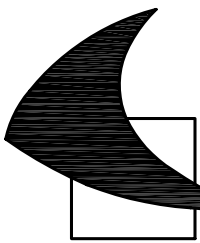
UTILITY CABINET TO HAVE 14 GA. TYPE 304, 18/8 STAINLESS STEEL, POLISHED TO A # 4 SATIN FINISH. TOP EDGE TO HAVE 1 1/2" TURN DOWN ON ALL SIDES & 1/2" RETURN ON FRONT EDGE. BOTTOM & INTERMEDIATE SHELVES TO BE 18 GA. S/S WELDED TO 18 GA. S/S SHELF ENDS. BOTH ENDS OF UNIT TO HAVE 18 GA. S/S END PANELS. BACKSPLASH TO BE TURNED UP ON 1/4" RADIUS, 6" VERTICALLY, & BACK 2" ON A 45° ANGLE. LEGS TO BE 1 5/8" O.D. S/S, 6" HIGH WITH ADJUSTABLE S/S BULLET FEET. ALL WELDS TO BE GROUND SMOOTH & POLISHED. HINGED DOORS TO BE DOUBLE PAN 18 GA. S/S WITH S/S RECESSED PULL.

955 PATTERSON DRIVE  
BLOOMSBURG, PA. 17815  
TELEPHONE: (570) 387-8980 FAX: (570) 387-8982



CUSTOM BUILT  
FOODSERVICE  
EQUIPMENT





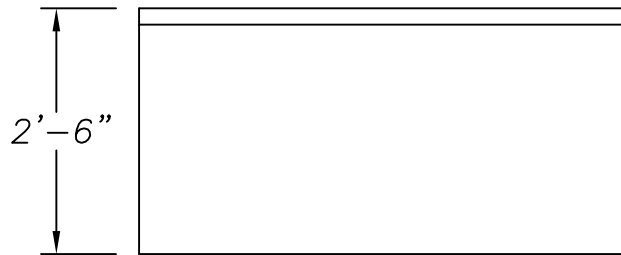
# Commercial Stainless

ITEM # \_\_\_\_\_

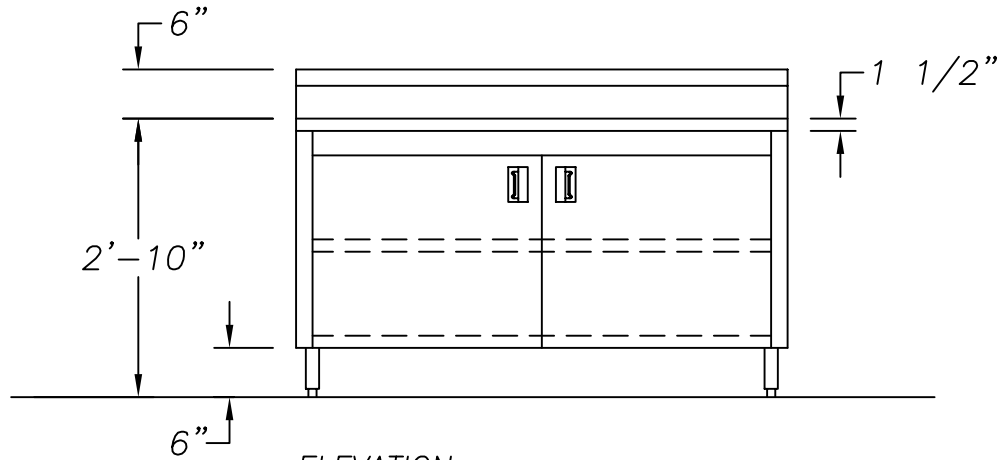
QTY. \_\_\_\_\_

MODEL # CUCBHD

## UTILITY CABINET WITH BACKSPLASH AND HINGED DOORS



PLAN VIEW



ELEVATION

### OPTIONS

- |                                  |                                   |
|----------------------------------|-----------------------------------|
| 1. 16 GA. S/S TOP                | 2. ROLLED EDGE TOP                |
| 3. MARINE EDGE TOP               | 4. DELETE INTERMEDIATE SHELF      |
| 5. 5" DIA. SWIVEL CASTORS        | 6. 1 1/4" SQUARE STEEL FRAME      |
| 7. URN TROUGH                    | 8. 1 1/4" SQUARE S/S FRAME        |
| 9. FLANGED FEET                  | 10. REMOV. S/S KICKPLATE          |
| 11. SOUND DEADENING              | 12. REMOV. LAMINATED KICKPLATE    |
| 13. PLASTIC LAMINATED PANELS     | 14. WHITE POLY CUTTING BOARD      |
| 15. ___" X ___" X ___" DEEP SINK | 16. S/S TRAY SLIDE                |
| 17. DRAIN                        | 18. 3/4" TURN-UP ON SHELVES       |
| 19. SPLASH ON LEFT END           | 20. LOCKS                         |
| 21. SPLASH ON RIGHT END          | 22. 3/4" R. TURN-UP ON BACKSPLASH |
| 23. 1" THICK BACKSPLASH          | 24. BREAKER PANEL                 |
| 25. LENGTH _____                 |                                   |

955 PATTERSON DRIVE  
BLOOMSBURG, PA. 17815  
TELEPHONE: (570) 387-8980 FAX: (570) 387-8982



CUSTOM BUILT  
FOODSERVICE  
EQUIPMENT 