

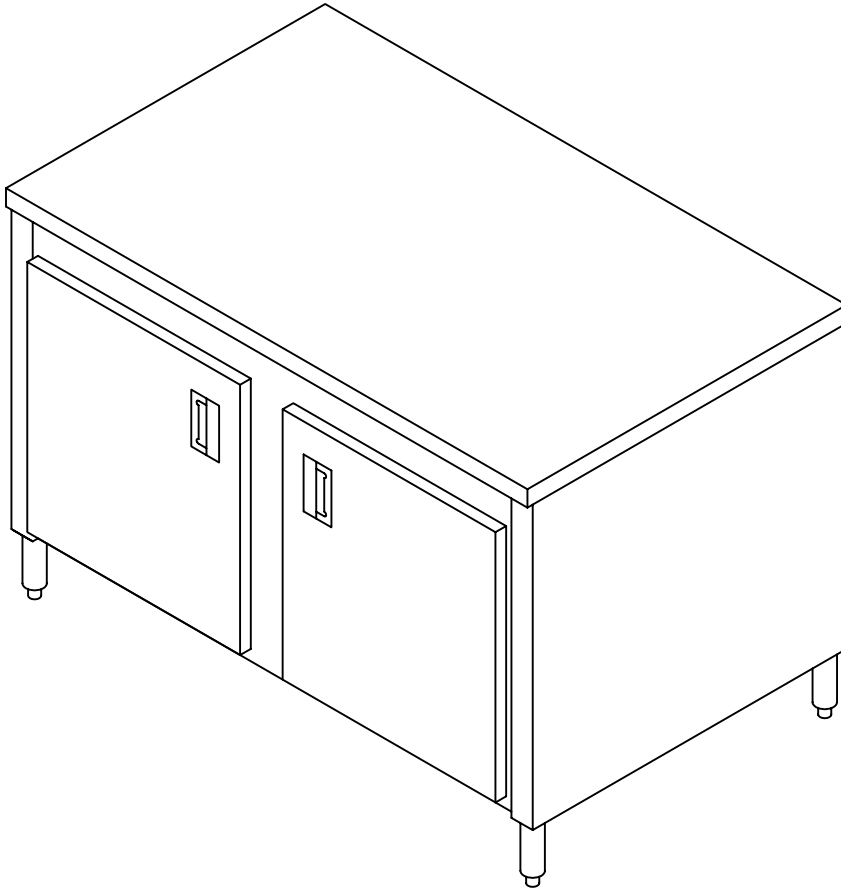
# Commercial Stainless

ITEM # \_\_\_\_\_

QTY. \_\_\_\_\_

MODEL # CRBR

## REFRIGERATED BASE (REMOTELY OPERATED)



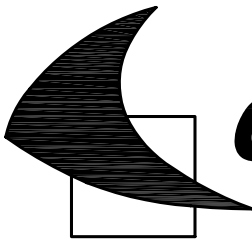
### SPECIFICATIONS

REFRIGERATED BASE TO HAVE 16 GA. TYPE 304, 18/8 STAINLESS STEEL TOP, POLISHED TO A # 4 SATIN FINISH. UNIT TO HAVE 18 GA. S/S INTERIOR WITH 2" THICK FOAMED IN PLACE INSULATION. REAR AND END PANELS TO BE 20 GA. S/S. INSULATED DOORS TO BE 18 GA. S/S WITH MAGNETIC GASKETS TO INSURE A PROPER SEAL.

955 PATTERSON DRIVE  
BLOOMSBURG, PA. 17815  
TELEPHONE: (570) 387-8980 FAX: (570) 387-8982



CUSTOM BUILT  
FOODSERVICE  
EQUIPMENT 



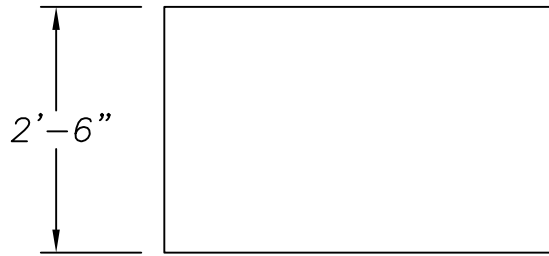
# Commercial Stainless

ITEM # \_\_\_\_\_

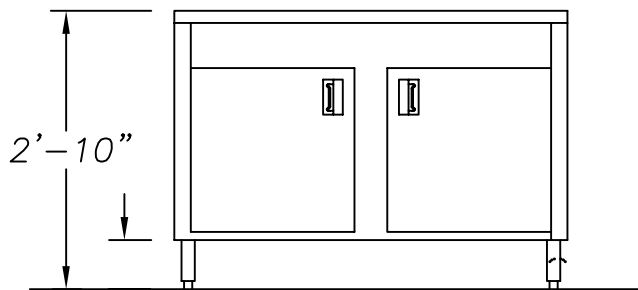
QTY. \_\_\_\_\_

MODEL # CRBR

## REFRIGERATED BASE (REMOTELY OPERATED)



PLAN VIEW



ELEVATION

### OPTIONS

- |  |                              |
|--|------------------------------|
| 1. 14 GA. S/S TOP                                      | 2. ROLLED FRONT EDGE         |
| 3. 16 GA. S/S SHELVING                                 | 4. MARINE EDGE               |
| 5. ADJ, WIRE SHELVING                                  | 6. 1 1/4" SQUARE STEEL FRAME |
| 7. FLANGED FEET  | 8. 1 1/4" SQUARE S/S FRAME   |
| 9. BACK SPLASH   | 10. LEFT END SPLASH          |
| 11. LAMINATED PANELS                                   | 12. RIGHT END SPLASH         |
| 13. S/S KICK PLATE                                     | 14. WHITE POLY CUTTING BOARD |
| 15. THERMOMETER  | 16. RICHLITE CUTTING BOARD   |
| 17. INTERIOR LIGHT                                     | 18. RECEPTACLE               |
| 19. DOOR LOCKS   | 20. LENGTH _____             |
| 21. CONDENSATE EVAPORATOR                              |                              |
| 22. 2 TIER DRAWER ASSEMBLY IN LIEU OF 22" DOOR OPENING |                              |

955 PATTERSON DRIVE  
BLOOMSBURG, PA. 17815  
TELEPHONE: (570) 387-8980 FAX: (570) 387-8982



CUSTOM BUILT  
FOODSERVICE  
EQUIPMENT 