

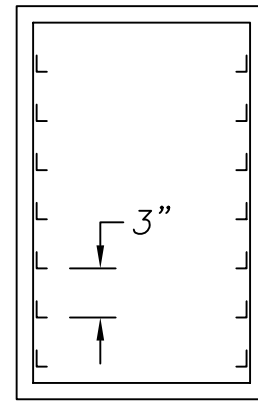
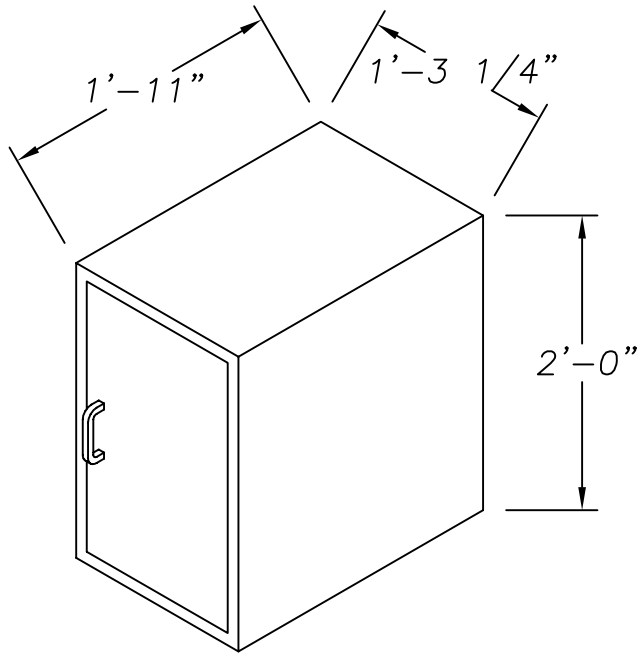
Commercial Stainless

ITEM # _____

QTY. _____

MODEL # CEFW

ELEVATED FOOD WARMER



SPECIFICATIONS

ELEVATED FOOD WARMER TO BE 18 GA. TYPE 304, 18/8 STAINLESS STEEL, POLISHED TO A # 4 SATIN FINISH. S/S SLIDES TO BE ON 3" CENTERS AND WELDED TO 1" SQUARE S/S TUBING UPRIGHTS. DOOR TO BE DOUBLE PAN 18 GA. S/S WITH 4" O.C. S/S HANDLE. BOTTOM OF CABINET TO HAVE A 11 1/2" X 19 1/2" OPENING WITH 1" FLANGE TO FIT INTO A 12" X 20" FOOD WARMER.

955 PATTERSON DRIVE
BLOOMSBURG, PA. 17815
TELEPHONE: (570) 387-8980 FAX: (570) 387-8982



CUSTOM BUILT
FOODSERVICE
EQUIPMENT 