

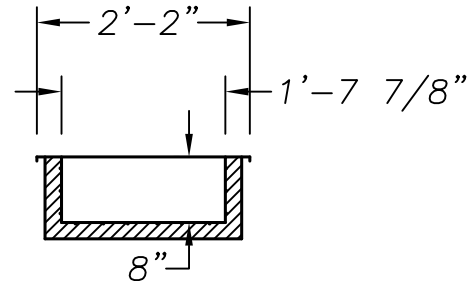
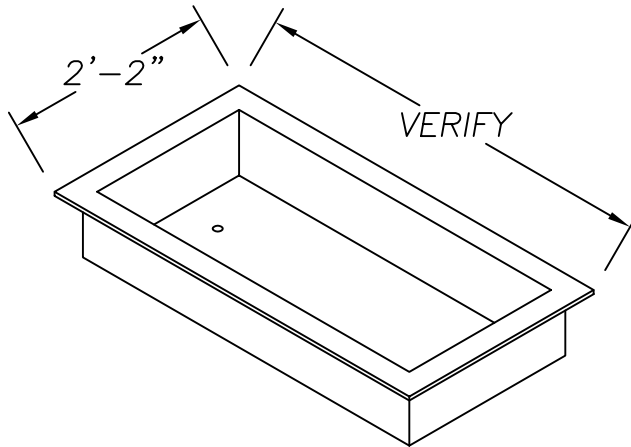
**Commercial  
Stainless**

ITEM # \_\_\_\_\_

QTY. \_\_\_\_\_

MODEL # CMCP

## DROP-IN MECHANICAL COLD PAN



CUT-OUT TO BE 1 3/4" SMALLER  
THAN OVERALL FLANGE DIMENSIONS

### SPECIFICATIONS

DROP-IN MECHANICAL COLD PAN TO BE 18 GA. TYPE 304, 18/8 STAINLESS STEEL, POLISHED TO A # 4 SATIN FINISH. COLD PAN TO BE 8" DEEP AND TO HAVE A 3" WIDE FLANGE ON TOP. PAN TO HAVE COPPER TUBING ON SIDES & BOTTOM. PAN TO HAVE 2" THICK INSULATION ON SIDES & BOTTOM, HELD IN PLACE BY GALV. EXTERIOR LINER. REFRIGERATION TO BE PROVIDED BY OTHERS. 1" DRAIN COUPLING TO BE PROVIDED.

### OPTIONS

- |                          |                              |
|--------------------------|------------------------------|
| 1. 14 GA. S/S LINER      | 2. 16 GA. S/S LINER          |
| 3. 3/4" R. COVED CORNERS | 4. 20 GA. S/S EXTERIOR LINER |

955 PATTERSON DRIVE  
BLOOMSBURG, PA. 17815  
TELEPHONE: (570) 387-8980 FAX: (570) 387-8982



CUSTOM BUILT  
FOODSERVICE  
EQUIPMENT 